



Your system  
integrator  
for intralogistics  
solutions.



[inthergroup.com](http://inthergroup.com)

> Solutions



**INTHER**  
improving intralogistics

# Improving intralogistics

## Efficient & sustainable

Inther Group provides best-in-class sustainable intralogistics solutions in distribution throughout the world. We are an experienced systems integrator with the capabilities to handle all types of intralogistic projects. With our highly skilled team of professionals – consisting of hardware engineers, software engineers and control engineers – we are at the forefront of technological developments in material handling. Our commitment and focus on continuous improvement enables us to deliver the most efficient and sustainable projects possible.

## Warehouse Control System

Inther delivers and maintains picking, packing, storage and sorting systems built on the modular and highly flexible Inther LC software suite. This backbone enables us to fully integrate several different order picking concepts as well as multiple sub-systems into a single, reliable solution. This streamlined functionality allows you, the customer, to have real-time insights into your warehouse workflows.

## 100% project responsibility



Concept



Implementation



Start-up



Operation

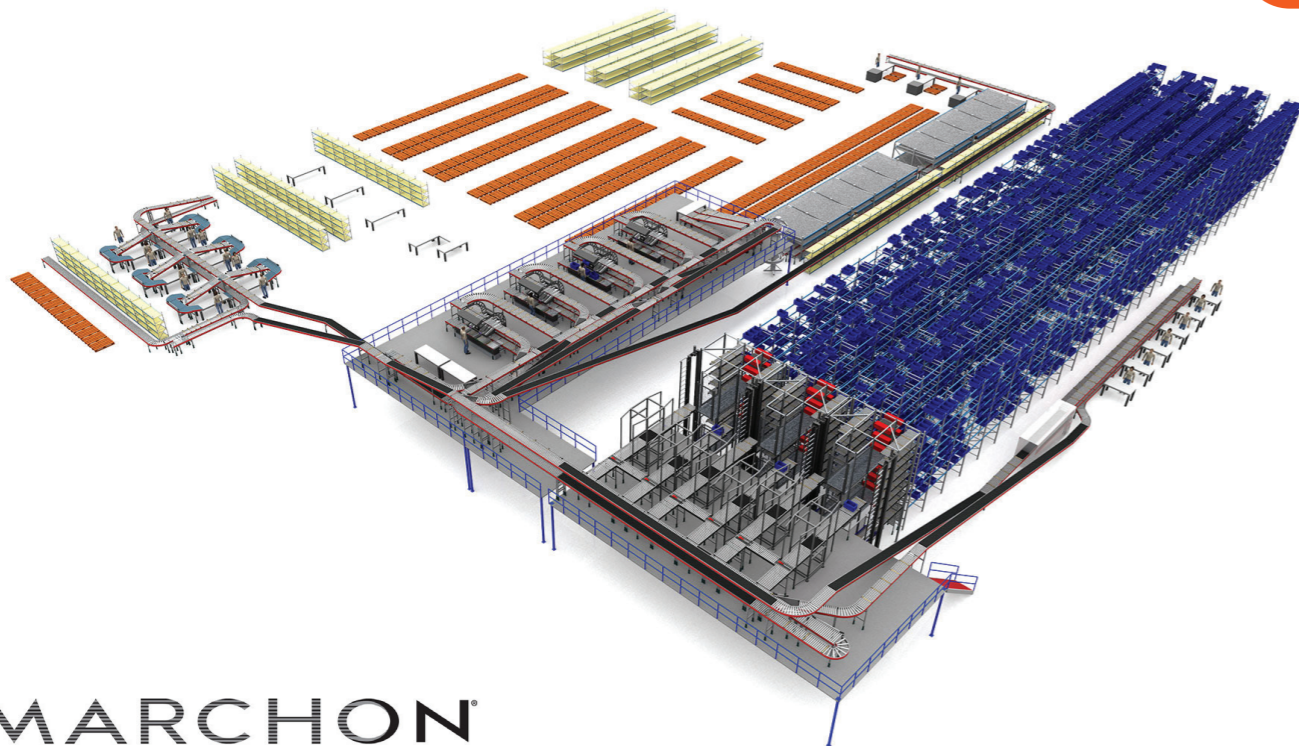


# Marchon

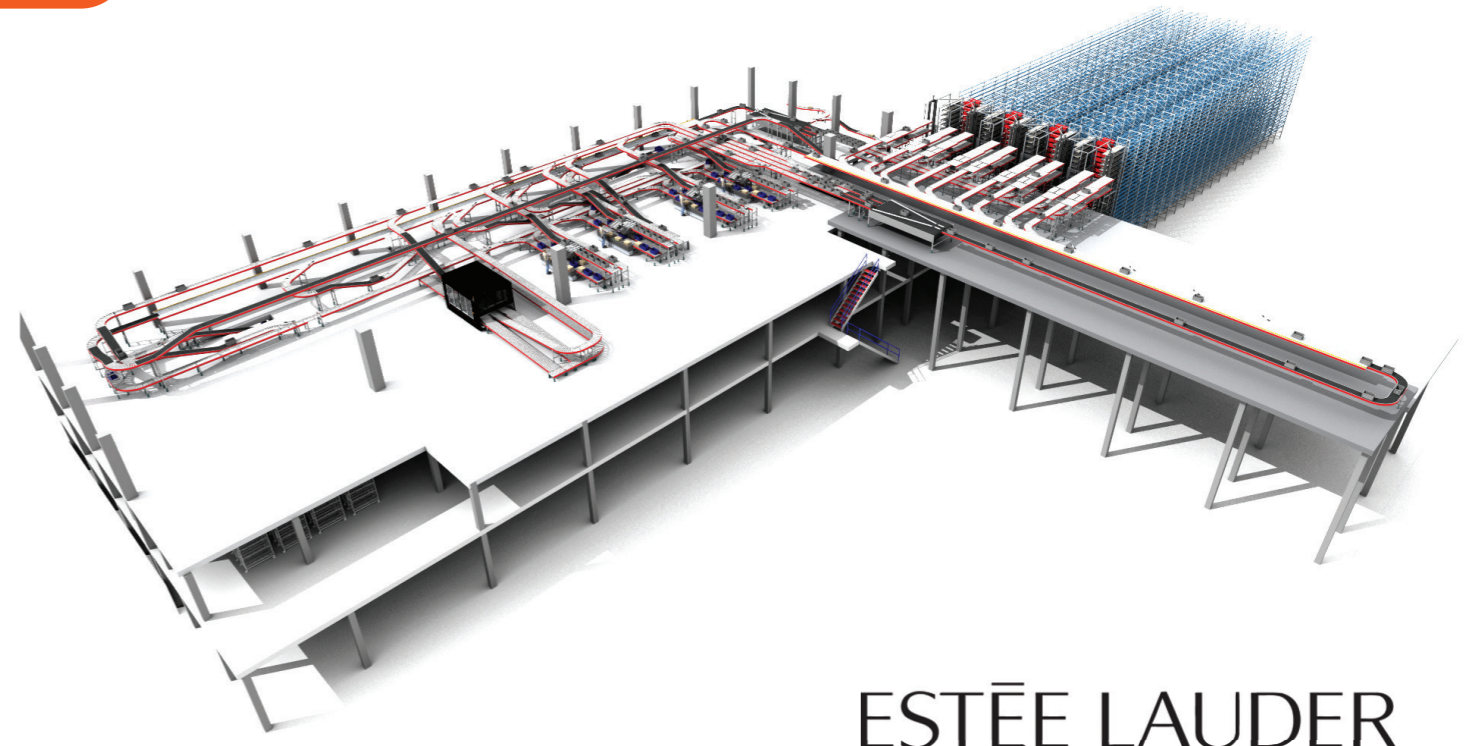
- > 3 shuttle aisles
- > 24,000 storage locations
- > 4 Goods to Person workstations
- > 6 receiving workstations
- > Integrated picking of frames

# Estée Lauder

- > 4 shuttle aisles
- > 33,280 storage locations
- > 8 Goods to Person workstations
- > 3 receiving workstations
- > 58 zone picking workstations
- > Gantry Robotic Intelligent Piece Picker (GRIPP)



MARCHON



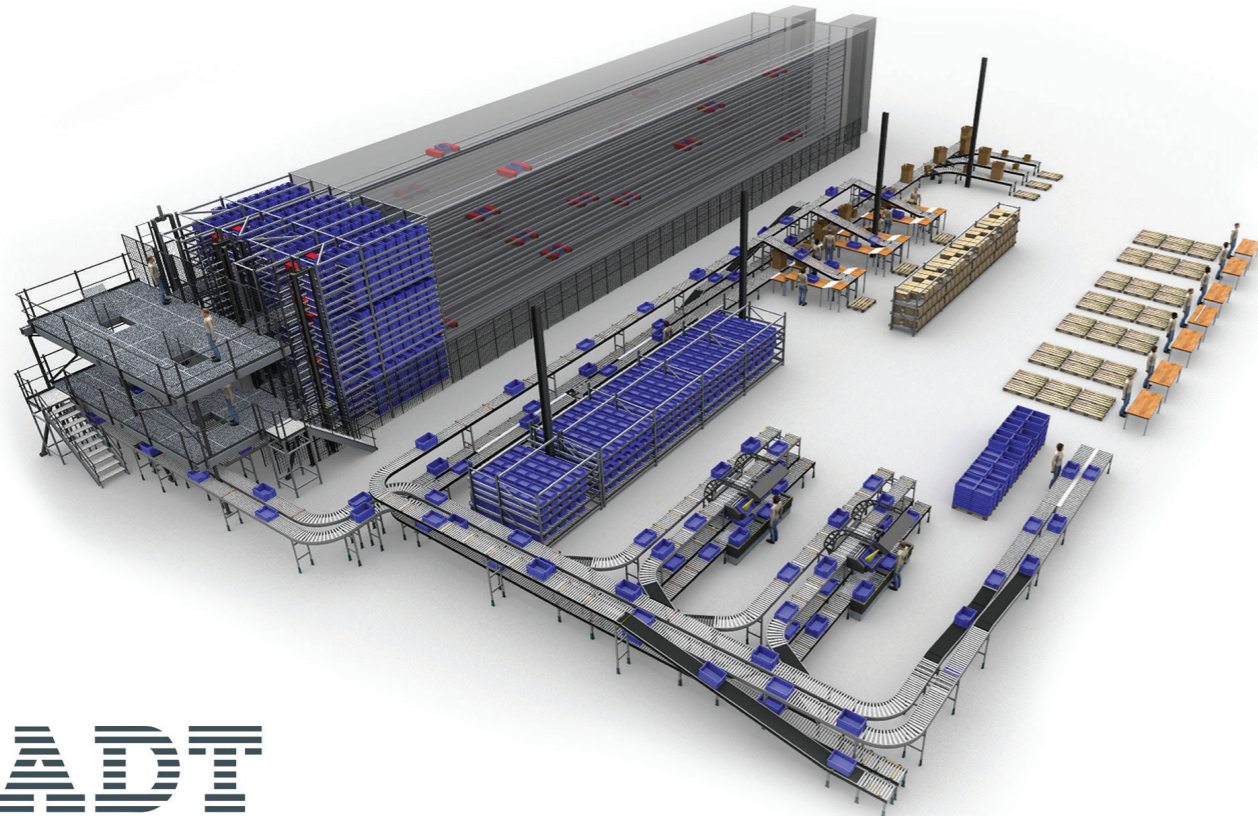
ESTÉE LAUDER

# ADT

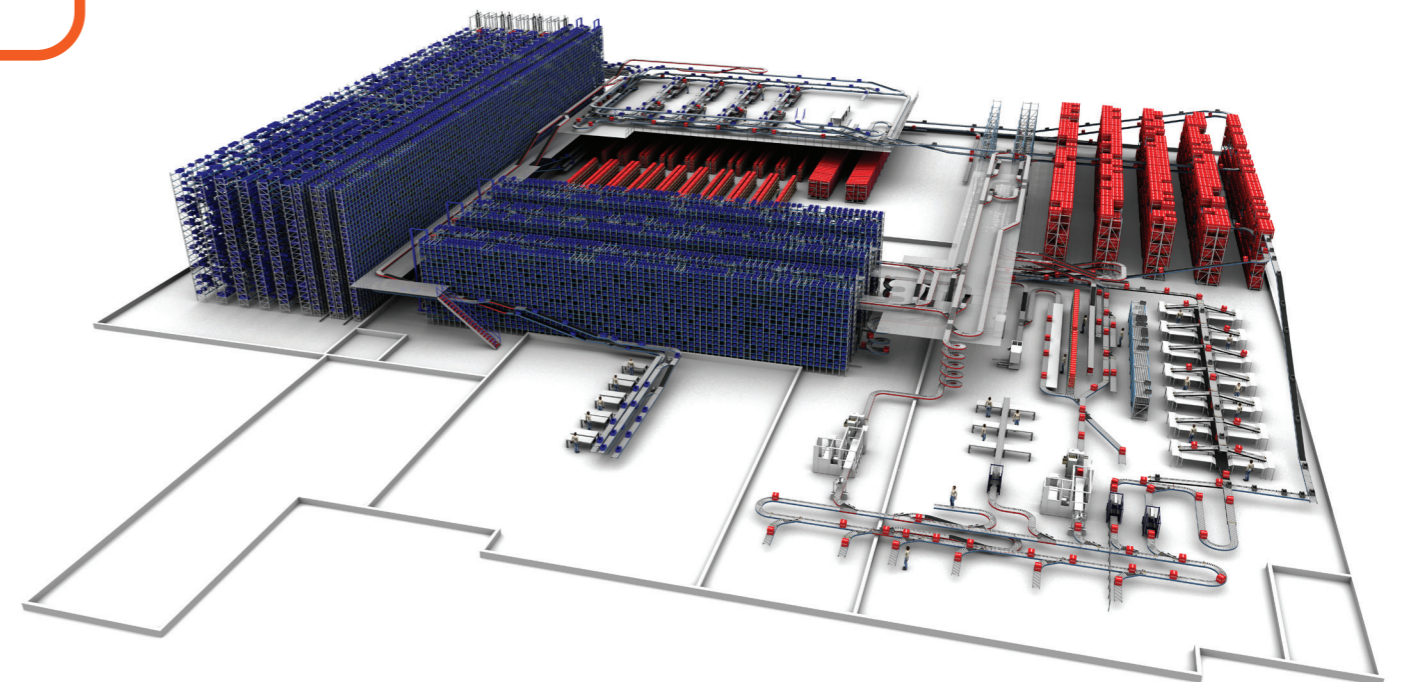
- › 2 shuttle aisles
- › 11,560 storage locations
- › 2 Goods to Person workstations
- › 1 receiving workstation
- › Integrated Full Case Picking and Fast Mover Picking

# HEMA

- › 3 shuttle aisles
- › 5 miniload aisles
- › 8 Goods to Person workstations
- › 61,313 storage locations
- › 28 Pick to Light carts
- › 16 fast mover workstations
- › Automated packing



ADT



HEMA

# Inther Group

## Improving intralogistics

 The Netherlands (HQ)

 Germany

 Belgium

 Moldova

 USA

 China  
› Shanghai  
› Suzhou



[info@inthergroup.com](mailto:info@inthergroup.com)  
[www.inthergroup.com](http://www.inthergroup.com)

**INTHER**  
improving intralogistics